

# B&G Clorame 25

Mixture of microelements with copper and boron, enriched with magnesium



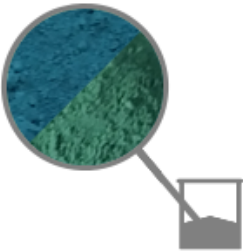
## EU Fertilizer

Aspetto:

**Fine wettable dust**

Color:

**Blue/green**



For copper deficiency. Oxychloride copper. Enhancing efficiency of chemical phosphate, potassic, nitrogen fertilizers and their spreading uniformity.

Special high performing formulation with rapid spread.

### Warning:

Do not use when flowering. To be used in the freshest hours of the day. Do not mix with products with alkaline reaction. Before mixing it with phytosanitariaries or other fertilizers make a compatibility test. No direct mixing with amino acids, humic acids and organic products. To be used only when strictly required.

i Properties	
Copper (Cu) total	25% (%p/p)
Water-soluble boron (B)	0,2 (%p/p)
Water-soluble magnesium oxide (MgO)	2 (%p/p)
pH dispersion 1%	6,5-7,5

kg Packages	
Code:621	1 kg - bag (box of 20 pcs) - Pallet:600 kg
Code:625	5 kg - bag - Pallet:1000 kg
Code:6210	10 kg - bag - Pallet:1000 kg

Foliar	
Fruit trees (apple, pear, peach, cherry, apricot, plum)	2,5-3,2 kg/ha in 500/700 liters of water
Grapes	2,5-3,2 kg/ha in 500/700 liters of water
Olive	3,0-3,9 kg/ha in 500/700 liters of water
Open field (beet, cereals, rice, tobacco), flower crops	1,9-2,5 kg/ha in 400/600 liters of water
Vegetable crops, strawberry, fennel, ornamental crops	3,2-3,8 kg/ha in 500/700 liters of water



B&G PRODUZIONI SRL

Sede legale: Via Rosselli n. 34 37045 Legnago VR - Stabilimento: Viale del Lavoro n. 6 loc.

Bonavicina 37050 San Pietro di Morubio VR - Telefono: +39 045 7125474

Fax +39 045 7125529 - P.Iva e Cod. Fiscale: 10715921002 - PEC: bg.produzionisrl@legalmail.it

