












Catalogue 2023



INDEX

Company 	
Company	4
Our Team	4
Our Products	5
Policy for quality and environment	5
Certifications	6
New machinery 4.0	6
How to reach us / Contacts	7
Tecnical info 	
Technical guidelines	8
The power of copper	10
Sulphur	11
Agriculture 	
Copper products	
Solfato di rame 98%–99% Granulare	12
Solfato di rame 98%–99% Stone	13
B&G Clorame 25	14
B&G Clorame 30	15
Clorame 30	16
B&G Clorame 37	17
B&G Clorame 40	18
B&G Clorame 48	19
B&G Idroram 25	20
B&G Idroram 46	21
B&G Idroflow 11	22
Oxi 5 PB TE	23
B&G Clorame Flow 20	24
B&G Tris	25
B&G Cupromil 6	26
Poltiram 21 	27
Sulphur products	
B&G Zolfo 80	28
B&G Zolfo Flow (40)	29
Zolfo 51 S Flow SC	30
Zolfo 55 S Flow SC	31

Solid and liquid mixtures of copper and sulphur	
B&G Tek	32
Magic Blend	33
B&G Poker	34
B&G Zolfox 20–10 Flow	35
Flow Mix	36
Flow Mix 8	37
Equilibrato Flow	38
Copper Zolf 22 Flow	39
Poker MOL	40
Other products	
B&G Liquid Blend verdi e fiorite	41
B&G Calce	42
Tan Tan 34 (chestnut tan extract)	43
Micro-E 	44
Oxi-Z2 	45
Products on demand	46
Additives 	
Antifoam Agro	47
Strengtheners	
Rock powder (100% kaolin)	48
Rock powder (50% kaolin in water)	49
Chestnut tannin extract 	50
Zeo-Te 	51
Industry 	
Technical oxychloride	52
Technical Copper Sulphate	53
Cupromil 5 Industrial Gel	54



COMPANY PROFILE

B&G Produzioni started its activity in the production of fertilizers, products for agriculture and industrial applications in 2009. Soon, thanks also to the investments in financial and human resources in the different company areas, it specialized in products based on copper, sulphur, NPK for professional and domestic application for agriculture and industrial sectors, enlarging its product range and, meeting more and more the requests of domestic and international market, it is today a reference company.

VISION AND MISSION

B&G Produzioni target is to cooperate with its own customers with an offer of high quality products, details care, prompt and flexible service with a special attention to mutual development and environmental and economic sustainability.

Our aim is therefore a continuous improvement of our presence on the market with quality products and service developed and realized with utmost expertise obtained in accordance with current regulations, continuous improvement of system efficiency and a team work involving all company levels.

OUR TEAM

We are a young and dynamic company and being a team is our slogan.

Research and development

Driving core for research and development of new formulations and products thought for customer needs.

Quality control

Keeping the whole production process (from raw materials incoming to finished product) under control carrying out quality and stability tests and relevant checks so that products, packagings and their transport comply with relevant regulations.

Production

Thanks to available technologies quality and high security products are available to customers, in accordance with well defined company programs with regard to training, control and development.

Customer service

Always available to guarantee the full customer satisfaction and ready to help for all requests or issues.

Full service

Customer made formulations, tailor made labels available on request as well as screen-printed bottles with brand and graphics of the customer.



OUR PRODUCTS

Production and packaging of powders, liquids, flowables and gels with our own brand (B&G Produzioni) or customized with private label.

- EU fertilizers prepared according to the new EU Regulation 2019/1009 entered into force on 16/07/2022
- Domestic fertilizers in accordance with law decree 75/10
- Strengtheners and correctives
- Industrial products

Our products are registered at SIAN and comply with law regulations for classification, labelling and packaging of substances and mixtures in accordance – at international level – with the requirements of GHS (Global Harmonized System)

POLICY FOR QUALITY AND ENVIRONMENT

B&G Produzioni has been developing a special attention to environment issues to guarantee an economic development able to sustain environment and concentrated on reducing possible impacts by preventing pollution. This turned out in a continuous improvement of system efficiency, reduction of negative environment effects and energy consumption optimization.

B&G Produzioni adopted a quality and environmental management system in accordance with UNI EN ISO 9001 and UNI EN ISO 14001 standards and our range offers a wide selection of products for organic cultivations.



CERTIFICATIONS



UNI EN ISO 9001:2015



UNI ISO 14001:2015



NEW MACHINERY INDUSTRY 4.0

In order to offer more service and committed to meet our targets of improvement and innovation we moved to 4.0 technology. Since 2022 a new bottling system for 1 kg has been operating according to this technology for our flow products. In 2023 a further more flexible 4.0 plant will be available for processing bottles starting from 250 gr.

With regard to powder preparation we will be able soon to process with our machinery further types of new products also in bags of 500 gr.



How to reach us

■ Viale del Lavoro 6, Loc. Bonavicina 37050 San Pietro di Morubio (VR)

Opening hours (Monday–Friday)

■ Offices: 08.00–12.00/14.00–17.30

■ Loading/Unloading: 08.00–11.30/13.30–16.30

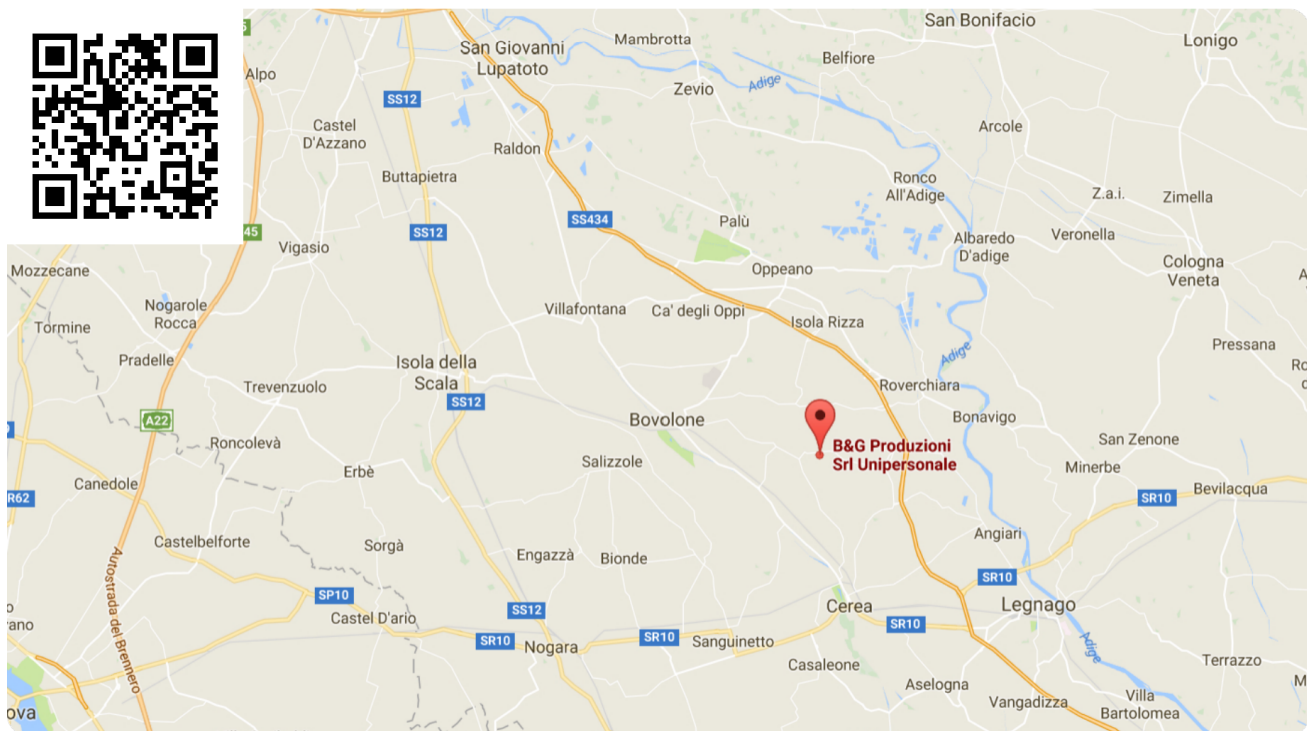
Contacts

■ Tel. +39 045 7125474

■ Email: info@begproduzioni.com

■ Pec: bg.produzionisrl@legalmail.it

■ Email for orders: commerciale@begproduzioni.com



TECHNICAL GUIDELINES

The importance of nutrients and their deficiencies

Boron

Boron is a very important microelement, playing different roles in the physiological processes of the plant. Boron deficiency occurs on leaves, buds and inflorescences:

- leaves: in the medium and upper part of the buds, before flowering, light coloured, yellow areas with indistinct outlines are present in the internodal sectors; leaves do not grow and remain small, developing vein bubbles turning into internodal necrosis in severe cases;
- buds: internodes are short and in severe cases the growth of terminal meristems is causing the development of ramifications which give to buds a "broomstick aspect";
- flowering: boron deficiency is altering the flowering and fertilization process; many not fertilized flowers are drying.

Boron deficiency is present especially on calcareous, light, irrigated and poor in organic substances soils. The excess of boron is causing symptoms similar to salinity effects: yellowing and drying of the tops, extended to young leaves starting from the edges.

Magnesium

Deficiency of magnesium (mobile element) in the plants occurs in the middle of the plant or in the lower leaves, reaching younger leaves. They yellow or whiten with dark green veins. Lower and middle leaves develop yellow spots among dark green veins. The edges of the leaves are folding before the leaf falls. Plant may yellow in few weeks and in the most severe cases it turns completely white. Therefore the most serious risks are the following:

- Patchy chlorosis (starting from old leaves)
- Premature fall of oldest leaves
- Upward curling of foliar edges

Manganese

Deficiency of manganese (immobile element) is associated to the combined deficiency of iron and zinc and occurs in the internodal areas which are yellowing while veins remain green. Symptoms are affecting also older leaves. Necrosis areas could develop on the affected leaves that fall. Plant is whitered, growth is slow and tops are crinkled.



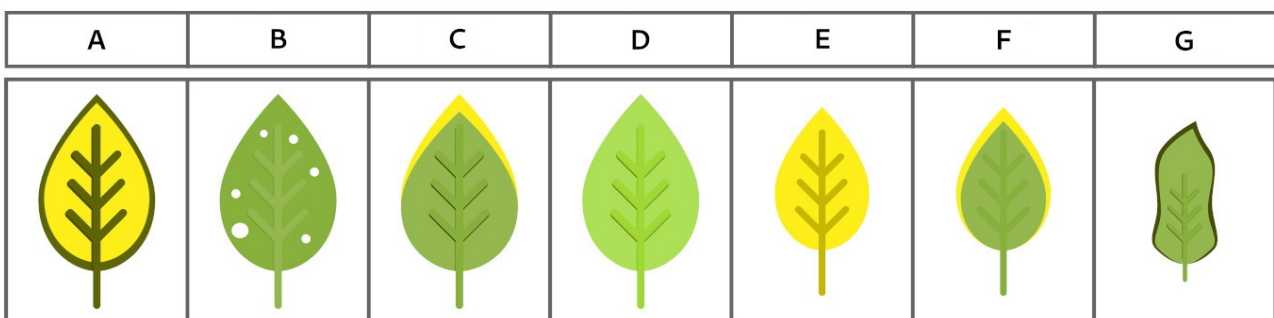
Excess of manganese occurs on new leaves and tops which develop an orange-rusty colour affecting then also old leaves. Growth is slow.

Molybdenum

Molybdenum is a micronutrient whose solubility is higher on alkaline soils and less on those with more acid pH. On legumes molybdenum deficiency occurs often as a nitrogen deficiency as the microelement is involved in its fixing. Deficiency may occur especially on sand, acid or highly moist or wet soils.

Deficiency effects are the following:

- Difficult growth of the plants and dwarfism
- Small, very thin yellow and spotted leaves
- Drying and deformation of leaf blades
- Limited production of pods for legumes



<p>A) Phosphorus deficiency Yellowing of leaves and presence of dead areas.</p>	<p>E) - Iron deficiency New leaves are yellow, central rib included.</p>
<p>B) Potassium deficiency Fragile leafs and presence of small holes</p>	<p>F) Sulphur deficiency Plants develop poorly, suffer from dwarfism and appear atrophied. Also in this case leaves turn to yellow.</p>
<p>C) Nitrogen deficiency Old leaves turn to a pale green and yellow colour. Its presence occurs on edge.</p>	<p>G) Calcium deficiency New leaves are curled and pale.</p>
<p>D) Magnesium deficiency Pale colour all over the leaf, vein included and in severe case also fall of the leaf.</p>	

THE POWER OF COPPER

Copper is a very important microelement necessary for the health of plants and animals. Deficiency of copper in the soil is a problem for the production of food as it causes less crop yields and lower quality. Nitrogen fertilizers can worsen copper deficiency of the soils.

Rice and wheat, the two most important food crop elements all over the world, are very sensitive to copper deficiency; the same occurs for other crops such as citrus fruit, oat and spinach.

The most efficient strategy to counteract copper deficiency is the supply of copper as fertilizer.

Copper is involved in various enzymatic processes in which it cannot be replaced by any other metal ion. It is absolutely necessary for the metabolism of carbohydrates and nitrogen and it is involved in the development of the cell walls, in transporting the electrons and in the oxidation reactions. Copper is also influencing the chemical composition and the development of cell walls, the synthesis of lignin which in turn is influencing lignification and the physical strength of buds and stems which shall react to parasite attacks.

B&G Produzioni copper based products have been properly developed to prevent and solve copper deficiency. They cause a rapid foliar development in the plant as copper is enhancing photosynthesis.

Copper has mostly catalytic functions and is actively involved in the redox process being also a builder of important enzymes. Its role in the plant metabolism is often in addition to that of iron.

It is a multifunctional element also in the development of important elements such as browning, laccase and oxidase of ascorbic acid. It is necessary also for photosynthesis and contributes to stimulate the natural defenses of the plant from parasites. The content of copper in plants is varying from 2.5 to 3.5 mg/kg on dry substance and in the same plant higher quantities are found on tissues more active from a metabolic point of view as young leaves and buds. Copper is present in the soil as exchange cation or basic salt. Its absorption in the plants occurs as bivalent element, both as simple or organic complex ion. Soil has a strong copper retention capacity. In an alkaline soil and with a large presence of organic substance copper becomes less biologically available due to the development of very high insoluble mixtures. Deficiency of copper occurs with yellowing and spot development on foliar edges especially for pome fruit; further symptoms are peculiar atrophy of the young buds. Copper deficiency is most frequent in soils rich on organic substances or in those with alkaline reaction.

Symptoms of copper deficiency

- Drying of plant tops/younger leaves
- Leaves turning to dark green, especially for younger ones
- Curling and crinkling of leaves
- Necrotic areas
- Unoften bark shows tears and produces gummy substances
- Plant is highly suffering
- Foliar yellowing and sometimes whitening



SULPHUR

Sulphur is an element known since ancient times and it is absolutely necessary and present in the most important tissues (seeds, soils, cellular liquid). Sulphur is present in thermal and sulphurous water, heads of matches, minerals, amino acids (cysteine) and vitamins (e.g. vitamin B1), keratin, as component of gunpowder and of battery acid and in fertilizers and correctives.

It is a mesoelement playing a primary role which, if not available in proper quantities, may cause metabolic problems with negative repercussions on the proteic synthesis with special regard to the synthesis of the sulfonated amino acids, cysteine and methionine. Cysteine for instance is absolutely necessary to obtain flours for bakery.

Actions on the soil

Used to correct acidity (lowering pH) of vineyards, flower and ornamental crops, open field, vegetable crops, tree crops and to prevent and compensate sulphur deficiency. Treatment is influencing the activity of microorganisms which are transforming sulphur into sulphuric acid thus lowering pH and influencing the absorption speed of fertilizing elements.

It enables absorption of phosphorus and soil microelements otherwise not bio available as interfering with soil alkalinity. It facilitates the development of soluble salts (sulphates) enabling an easier run-off of the same in the soils rich of them and an easier absorption of water.

Foliar treatment

Important element for preventing and correcting sulphur deficiency. It enables the correct function of plant metabolic activities. Sulphur is a component of essential amino acids (cysteine and methionine) present in the proteins and in the enzymes thus allowing photosynthesis. Important results are advanced ripening by some days and production increase both from quality and quantity point of view.

Symptoms of sulphur deficiency

- Difficult growth of the plant
- Development of small top leaves not luxuriant
- General yellowing especially for young leaves
- Curling of leaf blades



Solfato di rame 98%–99% Granulare

Pentahydrate copper sulphate, copper salt



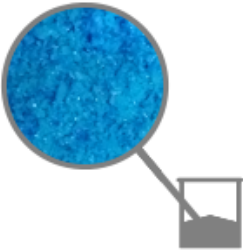
EU Fertilizer

Aspect:

Crystals

Colour:

Light blue



High purity water-soluble fertilizer. Pentahydrate Copper Sulphate (Cu: 25% p/p).

The specific shape and colour of the crystals along with the tests carried out enhance their quality and chemical-physical properties peculiar of a production process which is using high quality raw materials.

Nutrition product reinforcing plants in case of copper deficiency manifested by yellowing and/or foliar deformation, necrosis, bud decay. It reinforces natural plant defenses against stress.

Warnings:

To be used only when strictly required. Do not exceed appropriate dosage rates.

Properties
Water-soluble copper (Cu) 25% (%p/p)
pH dispersion 1% 4,5 - 6,0
Water solubility 25°C 24 (g/100ml)

Packages
Code:103G 5 kg - bag - Pallet:1500 kg
Code:102G 10 kg - bag - Pallet:1500 kg
Code:101G 25 kg - bag - Pallet:1500 kg
Code:BB1000 Big Bag - Pallet:1000 kg

Foliar fertilization
Fruit trees 2,0–4,5 kg/ha in 500/700 liters of water. Repeat in case of heavy rain.
Grapes 3,5–5,5 kg/ha in 500/700 liters of water. Repeat in case of heavy rain.
Olive 3,0–6,0 kg/ha in 500/700 liters of water. Repeat in case of heavy rain.
Open field 5,5–7,5 kg/ha in 400/600 liters of water. Repeat in case of heavy rain.
Ornamental and flower crops 1,5–2,0 kg/ha in 500/700 liters of water
Vegetable crops, strawberry 2,0–2,5 kg/ha in 500/700 liters of water



Solfato di rame 98%–99% Stone

Pentahydrate copper sulphate, copper salt



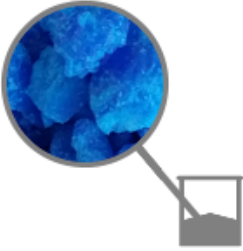
EU Fertilizer

Aspect:

Big crystals

Colour:

Light blue



High purity water-soluble fertilizer. Pentahydrate copper sulphate.

The specific shape and colour of the crystals along with the tests carried out enhance their quality and chemical-physical properties peculiar of a production process which is using high quality raw materials.

Nutrition product reinforcing plants in case of copper deficiency manifested by yellowing and/or foliar deformation, necrosis, bud decay. It reinforces natural plant defenses against stress.

Warnings:

Do not use when flowering. To be used in the freshest hours of the day. Do not mix with products with alkaline reaction. Before mixing it with phytosanitaries or other fertilizers make a compatibility test. No direct mixing with amino acids, humic acids and organic products. To be used only when strictly required.

i Properties	
Water-soluble copper (Cu) 25% (% p/p)	
pH solution 1% 4,5 - 6,0	
Water solubility 25°C 24 (g/100ml)	

kg Packages	
Code:103N	5 kg - bag - Pallet:1500 kg
Code:102N	10 kg - bag - Pallet:1500 kg
Code:101N	25 kg - bag - Pallet:1500 kg
Code:BB1000P	Big Bag - Pallet:1000 kg

Foliar fertilization	
Fruit trees	2,0–4,5 kg/ha in 500/700 liters of water. Repeat in case of heavy rain.
Grapes	3,5–5,5 kg/ha in 500/700 liters of water. Repeat in case of heavy rain.
Olive	3,0–6,0 kg/ha in 500/700 liters of water. Repeat in case of heavy rain.
Open field	5,5–7,5 kg/ha in 400/600 liters of water. Repeat in case of heavy rain.
Ornamental and flower crops	1,5–2,0 kg/ha in 500/700 liters of water
Vegetable crops, strawberry	2,0–2,5 kg/ha in 500/700 liters of water



B&G Clorame 25

Mixture of microelements with copper and boron, enriched with magnesium



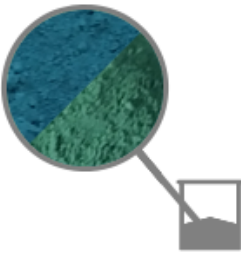
EU Fertilizer

Aspect:

Fine wettable dust

Colour:

Blue/green



For copper deficiency. Oxychloride copper. Enhancing efficiency of chemical phosphate, potassic, nitrogen fertilizers and their spreading uniformity.

Special high performing formulation with rapid spread.

Warnings:

Do not use when flowering. To be used in the freshest hours of the day. Do not mix with products with alkaline reaction. Before mixing it with phytosanitaries or other fertilizers make a compatibility test. No direct mixing with amino acids, humic acids and organic products. To be used only when strictly required.

i Properties	
Copper (Cu) total	25% (%p/p)
Water-soluble boron (B)	0,2 (%p/p)
Water-soluble magnesium oxide (MgO)	2 (%p/p)
pH dispersion 1%	6,5-7,5

kg Packages	
Code:621	1 kg - bag (box of 20 pcs) - Pallet:600 kg
Code:625	5 kg - bag - Pallet:1000 kg
Code:6210	10 kg - bag - Pallet:1000 kg

Foliar fertilization	
Fruit trees (apple, pear, peach, cherry, apricot, plum)	2,5-3,2 kg/ha in 500/700 liters of water
Grapes	2,5-3,2 kg/ha in 500/700 liters of water
Olive	3,0-3,9 kg/ha in 500/700 liters of water
Open field (beet, cereals, rice, tobacco), flower crops	1,9-2,5 kg/ha in 400/600 liters of water
Vegetable crops, strawberry, fennel, ornamental crops	3,2-3,8 kg/ha in 500/700 liters of water



B&G Clorame 30

Mixture of microelements with copper and boron, enriched with magnesium

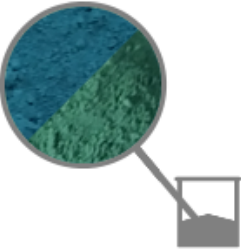
EU Fertilizer

Aspect:

Fine wettable dust

Colour:

Blue/green



For copper deficiency. Enhancing efficiency of chemical phosphate, potassic, nitrogen fertilizers and their spreading uniformity.

Special high performing formulation with rapid spread. 30% oxychloride copper.

Warnings:

Do not use when flowering. To be used in the freshest hours of the day. Do not mix with products with alkaline reaction. Before mixing it with phytosanitaries or other fertilizers make a compatibility test. No direct mixing with amino acids, humic acids and organic products. To be used only when strictly required.

i Properties	
Copper (Cu) total	30 (%p/p)
Water-soluble boron (B)	0,2 (%p/p)
Water-soluble magnesium oxide (MgO)	2 (%p/p)
pH dispersion 1%	6,5-7,5

kg Packages	
Code:62	1 kg - bag (box of 20 pcs) - Pallet:600 kg
Code:64	5 kg - bag - Pallet:1000 kg
Code:61	10 kg - bag - Pallet:1000 kg

Foliar fertilization	
Fruit trees (apple, pear, peach, cherry, apricot, plum)	2,3-3,0 kg/ha in 500/700 liters of water
Grapes	2,3-3,0 kg/ha in 500/700 liters of water
Olive	2,7-3,6 kg/ha in 500/700 liters of water
Open field (beet, cereals, rice, tobacco), flower crops	1,7-2,3 kg/ha in 400/600 liters of water
Vegetable crops, strawberry, fennel, ornamental crops	3-3,6 kg/ha in 500/700 liters of water



Clorame 30

Mixture of microelements with copper and boron

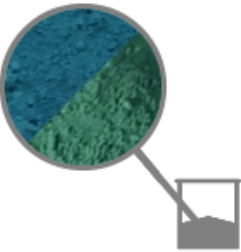
Fertilizer

Aspect:

Fine wettable dust

Colour:

Blue/green



For copper deficiency. Enhancing efficiency of chemical phosphate, potassic, nitrogen fertilizers and their spreading uniformity.

Special high performing formulation with rapid spread. 30% oxychloride copper.

Warnings:

Do not use when flowering. To be used in the freshest hours of the day. Do not mix with products with alkaline reaction. Before mixing it with phytosanitaries or other fertilizers make a compatibility test. No direct mixing with amino acids, humic acids and organic products. To be used only when strictly required.

Properties

Copper (Cu) total 30 (%p/p)

Water-soluble boron (B) 0,2 (%p/p)

pH dispersion 1% 6,5-7,5

Packages

Code:62SM

1 kg - bag (box of 20 pcs) - Pallet:600 kg

Code:64SM

5 kg - bag - Pallet:1000 kg

Code:61SM

10 kg - bag - Pallet:1000 kg

Foliar fertilization

Fruit trees (apple, pear, peach, cherry, apricot, plum)

2,3-3,0 kg/ha in 500/700 liters of water

Grapes

2,3-3,0 kg/ha in 500/700 liters of water

Olive

2,7-3,6 kg/ha in 500/700 liters of water

Vegetable crops, strawberry, fennel, ornamental crops

3-3,6 kg/ha in 500/700 liters of water



B&G Clorame 37

Mixture of microelements with copper and boron



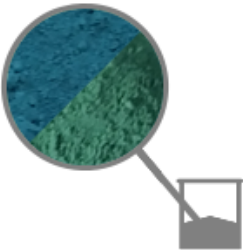
Eu Fertilizer

Aspect:

Fine wettable dust

Colour:

Blue/Green



For copper deficiency. High concentration of oxychloride copper.

Enhancing efficiency of chemical phosphate, potassic, nitrogen fertilizers and their spreading uniformity.

Special high performing formulation with rapid spread.

Warnings:

Do not use when flowering. To be used in the freshest hours of the day. Do not mix with products with alkaline reaction. Before mixing it with phytosanitaries or other fertilizers make a compatibility test. No direct mixing with amino acids, humic acids and organic products. To be used only when strictly required.

i Properties	
Copper (Cu) total	37 (% p/p)
Water-soluble boron (B)	0,2 (% p/p)
pH dispersion	6,5-7,5

kg Packages	
Code:CL37SC	1 kg - bag (box of 20 pcs) - Pallet:600 kg
Code:CL37K5	5 kg - bag - Pallet:1000 kg
Code:CL3710	10 kg - bag - Pallet:1000 kg

Foliar fertilization	
Fruit trees (apple, pear, peach, cherry, apricot, plum)	1,8-2,3 kg/ha in 500/700 liters of water
Grapes	1,8-2,3 kg/ha in 500/700 liters of water
Olive	2,7-3,6 kg/ha in 500/700 liters of water
Open field (beet, cereals, rice, tobacco)	1,4-1,8 kg/ha in 400/600 liters of water
Vegetable crops, strawberry, fennel, ornamental crops	2,9-3,4 kg/ha in 500/700 liters of water



B&G Clorame 40

Mixture of microelements with copper and manganese



EU Fertilizer

Aspect:

Fine wettable dust

Colour:

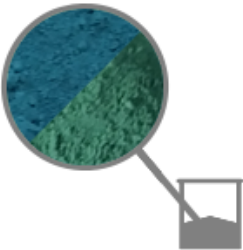
Blue/green

For copper deficiency. High concentration of oxychloride copper with manganese.

Special high performing formulation with rapid spread, developed for copper and manganese deficiency. Enhancing efficiency of chemical phosphate, potassic, nitrogen fertilizers and their spreading uniformity.

Warnings:

Do not use when flowering. To be used in the freshest hours of the day. Do not mix with products with alkaline reaction. Before mixing it with phytosanitaries or other fertilizers make a compatibility test. No direct mixing with amino acids, humic acids and organic products. To be used only when strictly required.



i Properties	
Copper (Cu) total	40 (%p/p)
Water-soluble manganese (Mn)	0,5 (%p/p)
pH dispersion 1%	6,5-7,5

kg Packages	
Code:162	1 kg - bag (box of 20 pcs) - Pallet:600 kg
Code:164	5 kg - bag - Pallet:1000 kg
Code:161	10 kg - bag - Pallet:1000 kg

Foliar fertilization	
Fruit trees (apple, pear, peach, cherry, apricot, plum)	1,6-2,1 kg/ha in 500/700 liters of water
Grapes	1,6-2,1 kg/ha in 500/700 liters of water
Olive	2,0-2,6 kg/ha in 500/700 liters of water
Open field (beet, cereals, rice, tobacco)	1,2-1,6 kg/ha in 400/600 liters of water
Vegetable crops, strawberry, fennel, ornamental crops	2,4-2,7 kg/ha in 500/700 liters of water



B&G Clorame 48

Mixture of microelements with copper and boron



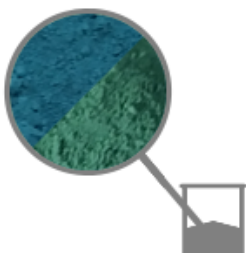
EU Fertilizer

Aspect:

Fine wettable dust

Colour:

Blue/green



For copper deficiency. High concentration of oxychloride copper enriched with boron.

Enhancing efficiency of chemical phosphate, potassic, nitrogen fertilizers and their spreading uniformity,

Special high performing formulation with rapid spread.

Warnings:

Do not use when flowering. To be used in the freshest hours of the day. Do not mix with products with alkaline reaction. Before mixing it with phytosanitaries or other fertilizers make a compatibility test. No direct mixing with amino acids, humic acids and organic products. To be used only when strictly required.

i Properties	
Copper (Cu) total	48 (%p/p)
Water-soluble boron (B)	0,2 (%p/p)
pH dispersion 1%	6,5-7,5

kg Packages	
Code:	182
1 kg - bag (box of 20 pcs) - Pallet:	600 kg
Code:	184
5 kg - bag - Pallet:	1000 kg
Code:	181
10 kg - bag - Pallet:	1000 kg

Foliar fertilization	
Fruit trees (apple, pear, peach, cherry, apricot, plum)	1,4-1,8 kg/ha in 500/700 liters of water
Grapes	1,4-1,8 kg/ha in 500/700 liters of water
Olive	1,6-2,2 kg/ha in 500/700 liters of water
Open field (beet, cereals, rice, tobacco)	1,0-1,4 kg/ha in 400/600 liters of water
Vegetable crops, strawberry, fennel, ornamental crops	1,8-2,2 kg/ha in 500/700 liters of water



B&G Idroram 25

Mixture of microelements with copper and boron, enriched with magnesium



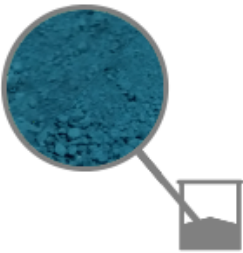
EU Fertilizer

Aspect:

Fine wettable dust

Colour:

Blue



Foliar fertilizer developed for copper deficiency enriched with boron and magnesium. Product with copper hydroxide obtained from high purity raw materials.

Catalytic action essential for photosynthesis. It increases quantity crop yields and proteins useful to obtain better quality of crops.

Warnings:

Do not use when flowering. To be used in the freshest hours of the day. Do not mix with products with alkaline reaction. Before mixing it with phytosanitaries or other fertilizers make a compatibility test. No direct mixing with amino acids, humic acids and organic products. To be used only when strictly required.

i Properties	
Copper (Cu) total	25 (% p/p)
pH dispersion 1%	6,5 - 7,5
Water-soluble boron (B)	0,2 (% p/p)
Water-soluble magnesium oxide (MgO)	2 (% p/p)

kg Packages	
Code:IDRO25SC	
1 kg - bag (box of 20 pcs) - Pallet:	600 kg
Code:IDRO255SC	
5 kg - bag (box of 20 pcs) - Pallet:	600 kg

Foliar fertilization	
Fruit trees (apple, pear, peach, cherry, apricot, plum)	2,0-2,4 kg/ha in 500/700 liters of water
Grapes	2,0-2,4 kg/ha in 500/700 liters of water
Olive	2,0-2,8 kg/ha in 500/700 liters of water
Open field (beet, cereals, rice, tobacco)	1,2-1,9 kg /ha in 400/600 liters of water
Vegetable crops, strawberry, fennel, ornamental crops	1,9-2,5 kg/ha in 500/700 liters of water



B&G Idroram 46

Copper hydroxide



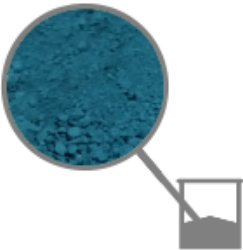
EU Fertilizer

Aspect:

Fine wettable dust

Colour:

Blue



Foliar fertilizer developed for copper deficiency. High concentration of copper hydroxide obtained from high purity raw materials.

Catalytic action essential for photosynthesis. It increases quantity crop yields and proteins useful to obtain better quality of crops.

Warnings:

Do not use when flowering. To be used in the freshest hours of the day. Do not mix with products with alkaline reaction. Before mixing it with phytosanitariaries or other fertilizers make a compatibility test. No direct mixing with amino acids, humic acids and organic products. To be used only when strictly required.

Properties
Copper (Cu) total 46 (% p/p)
pH dispersion 1% 6,5-7,5

Packages
Code:IDRO46SC
1 kg – bag (box of 20 pcs) – Pallet:600 kg
Code:IDRO465SC
5 kg – bag (box of 20 pcs) – Pallet:600 kg

Foliar fertilization
Fruit trees (apple, pear, peach, cherry, apricot, plum) 1,0-1,4 kg/ha in 500/700 liters of water
Grapes 1,0-1,4 kg/ha in 500/700 liters of water
Olive 1,2-1,8 kg/ha in 500/700 liters of water
Open field (beet, cereals, rice, tobacco) 0,7-1,2 kg/ha in 400/600 liters of water
Vegetable crops, strawberry, fennel, ornamental crops 1,3-1,9 kg/ha in 500/700 liters of water



B&G Idroflow 11

Fluid mixture of microelements with hydroxide copper and manganese



EU Fertilizer

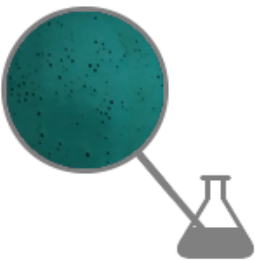
Aspect:

Water

suspension

Colour:

Blue



Foliar fertilizer developed for copper deficiency enriched with manganese. It contains hydroxide copper obtained from high purity raw materials.

Catalytic action essential for photosynthesis. Its flowable formulation enables an easy dustless application. It increases quantity crop yields and proteins useful to obtain better quality of crops.

Warnings:

Shake well before its application. Do not use when flowering. To be used in the freshest hours of the day. Do not mix with products with alkaline reaction. Before mixing it with phytosanitariaries or other fertilizers make a compatibility test. No direct mixing with amino acids, humic acids and organic products. Product is stable at normal temperature and pressure. Storage temperature between 5°C and 40°C. Not combustible. To be used only when strictly required.

i Properties	
Density, 25°C	1,10 - 1,20 (g/ml)
Copper (Cu) total	11 (% p/p)
Water-soluble manganese (Mn)	0,5 (% p/p)
pH dispersion 1%	6,5 - 7,5
Water solubility	Aqueous suspension

kg Packages	
Code:FLOWIDROSSIDO111	
1 kg - bottle (box of 12 pcs) - Pallet:	600 kg
Code:FLOWIDROSSIDO115	
5 kg - tank - Pallet:	630 kg
Code:FLOWIDROSSIDO1110	
10 kg - tank - Pallet:	500 kg

Foliar fertilization	
Fruit trees (apple, pear, peach, cherry, apricot, plum)	800-1500 g/hl water
Grapes	400-700 g/hl water
Olive	500-800 g/hl water
Open field (beet, cereals, rice, tobacco), flower crops	400-800 g/hl water
Vegetable crops, strawberry, fennel, ornamental crops	400-700 g/hl water



Oxi 5 PB TE

Mixture of microelements with copper, boron and manganese, enriched with magnesium

Oxychloride copper 5%



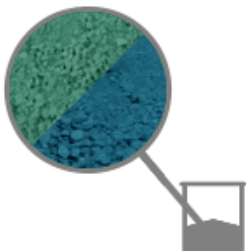
Fertilizer

Aspect:

Fine wettable dust

Colour:

Blue/green



For copper, boron and manganese deficiency. Enriched with magnesium.

Being magnesium essential for photosynthesis it is present in the development of some enzymes and pigments. In case of deficiency plants show wide chlorosis in the oldest leaves, defoliation, less production of flowers and fruit. Peculiar symptoms are for instance drying of grape rachis and apple physiopathies.

It enhances photosynthesis, colour of leaves and fruit and their production levels.

Special high performing formulation with rapid spread providing a complete crop nourishment thanks to the presence of mesoelements and microelements.

Warnings:

Do not use when flowering. To be used in the freshest hours of the day. Do not mix with products with alkaline reaction. Before mixing it with phytosanitaries or other fertilizers make a compatibility test. No direct mixing with amino acids, humic acids and products with acid reaction.

i Properties	
Copper (Cu) total 5 (%p/p)	
Water-soluble boron (B) 0,5 (% p/p)	
Water-soluble magnesium oxide (MgO) 4 (%p/p)	
pH dispersion 1% 7,0 - 8,0	
Water-soluble manganese (Mn) 1% (% p/p)	

kg Packages	
Code:05PB1SC	
1 kg - bag (box of 20 pcs) - Pallet:600 kg	
Code:05PB5	
5 kg - bag - Pallet:1000 kg	
Code:05PB10	
10 kg - bag - Pallet:1000 kg	

Foliar fertilization	
Fruit trees (apple, pear, peach, cherry, apricot, plum)	9-12 kg/ha in 550/800 liters of water
Grapes	9-12 kg/ha in 550/800 liters of water
Olive	10-13 kg/ha in 600/800 liters of water
Open field (beet, cereals, rice, tobacco), flower crops	8-12 kg/ha in 500/700 liters of water
Vegetable crops, strawberry, fennel, ornamental crops	12-18 kg/ha in 600/800 liters of water



B&G Clorame Flow 20

Fluid mixture of microelements with copper and manganese



EU Fertilizer

Aspect:

Water

suspension

Colour:

Blue



Foliar fertilizer developed for copper deficiency enriched with manganese. It contains oxychloride copper obtained from high purity raw materials.

Catalytic action essential for photosynthesis. Its flowable formulation enables an easy dustless application. It increases quantity crop yields and proteins useful to obtain better quality of crops.

Warnings:

Shake well before its application. Do not use when flowering. To be used in the freshest hours of the day. Do not mix with products with alkaline reaction. Before mixing it with phytosanitaries or other fertilizers make a compatibility test. No direct mixing with amino acids, humic acids and organic products. Product is stable at normal temperature and pressure. Storage temperature between 5°C and 40°C. Not combustible. To be used only when strictly required.

Properties

Copper (Cu) total 20 (%p/p)

Water-soluble manganese (Mn) 0,5 (%p/p)

pH dispersion 1% 5,5 - 6,5

Water solubility Aqueous suspension

Density, 25°C 1,37-1,41 (g/ml)

Packages

Code:FLOWCLORAME201

1 kg - bottle (box of 12 pcs) - Pallet:600 kg

Code:FLOWCLORAME205

5 kg - tank - Pallet:630 kg

Code:FLOWCLORAME2010

10 kg - tank - Pallet:500 kg

Foliar fertilization

Fruit trees (apple, pear, peach, cherry, apricot, plum)

900-1600 g/hl water

Grapes

300-600 g/hl water

Olive

400-700 g/hl water

Open field (beet, cereals, rice, tobacco), flower crops

300-700 g/hl water

Vegetable crops, strawberry, fennel, ornamental crops

300-600 g/hl water



B&G Tris

Fluid mixture of microelements with oxychloride copper, sulphate and hydroxide and manganese

With copper salt



EU Fertilizer

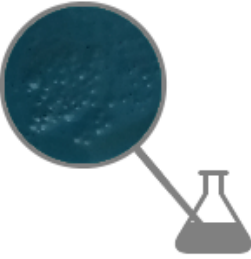
Aspect:

Water

suspension

Colour:

Blue



Foliar fertilizer developed for copper deficiency and enriched with manganese. It contains copper oxychloride, sulphate and hydroxide essential for a synergic action against copper deficiency.

Its flowable formulation enables an easy dustless application. It increases quantity crop yields and proteins useful to obtain better quality of crops.

Warnings:

Shake well before its application. Do not use when flowering. To be used in the freshest hours of the day. Do not mix with products with alkaline reaction. Before mixing it with phytosanitaries or other fertilizers make a compatibility test. No direct mixing with amino acids, humic acids and organic products. Product is stable at normal temperature and pressure. Storage temperature between 5°C and 40°C. Not combustible. To be used only when strictly required.

i Properties	
Density, 25°C	1,40-1,50 (g/ml)
Copper (Cu) total	20 (% p/p)
Water-soluble manganese (Mn)	0,5 (% p/p)
pH dispersion 1%	5,5-6,5
Water solubility	Aqueous suspension

kg Packages	
Code:FLOWTRIS1	1 kg - bottle (box of 12 pcs) - Pallet:600 kg
Code:FLOWTRIS5	5 kg - tank - Pallet:630 kg
Code:FLOWTRIS10	10 kg - tank - Pallet:500 kg

Foliar fertilization	
Fruit trees (apple, pear, peach, cherry, apricot, plum)	500-1200 g/hl water
Grapes	300-600 g/hl water
Olive	400-700 g/hl water
Open field (beet, cereals, rice, tobacco), flower crops	300-700 g/hl water
Vegetable crops, strawberry, fennel, ornamental crops	300-600 g/hl water



B&G Cupromil 6

Solution with copper (sulphate) for foliar fertilization and fertigation



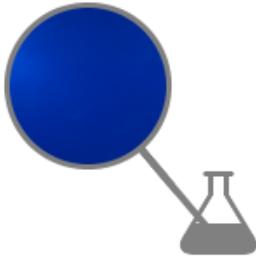
EU Fertilizer

Aspect:

Liquid

Colour:

Light blue



Solution of pentahydrate copper sulphate obtained from highest quality raw materials.

Formulated for low dosage application.

Specially developed for reinforcing plants in case of copper deficiency manifested by leaf yellowing and or deformation, necrosis, bud deterioration.

Increasing photosynthesis, copper enables an efficient plant development being directly assimilated by leaves and roots.

Warnings:

Shake well before its application. Do not use when flowering. To be used in the freshest hours of the day. Do not mix with products with alkaline reaction. Before mixing it with phytosanitaries or other fertilizers make a compatibility test. No direct mixing with amino acids, humic acids and organic products. Product is stable at normal temperature and pressure. Storage temperature between 5°C and 40°C. Not combustible. To be used only when strictly required.

i Properties	
Water-soluble copper (Cu) 6% (% p/p)	
Density, 25°C	1,15-1,25 (g/ml)
pH as it is, 25°C	2,4-3,0
Water solubility	Aqueous suspension

kg Packages	
Code:133	
1 kg - bottle (box of 12 pcs) - Pallet:600 kg	
Code:132	
5 kg - tank - Pallet:630 kg	
Code:130	
10 kg - tank - Pallet:500 kg	
Code:131CUBI	
IBC - Pallet:1000 kg	

Foliar fertilization	
Fruit trees (apple, pear, peach, cherry, apricot, plum, citrus fruit, hazelnut, walnut, kiwifruit), grapes	1,5-4,5 kg/ha in 500/700 liters of water
Olive	1,8-4,8 kg/ha in 500/700 liters of water
Open field (beet, cereals, rice, tobacco)	1,5-7,0 kg/ha in 400/600 liters of water
Vegetable crops, strawberry	1,5-4,0 kg/ha in 500/700 liters of water

Fertigation	
Flower and aromatic plants	0,8-1,5 kg/1000 mq
Fruit trees (apple, pear, peach, cherry, apricot, plum, citrus fruit, hazelnut, walnut, kiwifruit), grapes	3,0-5,0 kg/ha in 400/600 liters of water
Grapes	3,0-4,5 kg/ha
Olive	3,0-5,5 kg/ha
Open field (beet, cereals, rice, tobacco)	3,0-5,0 kg/ha
Vegetable crops, strawberry	0,7-1,6 kg/1500 mq



Poltiram 21

Mixture of microelements with copper and boron

NEW

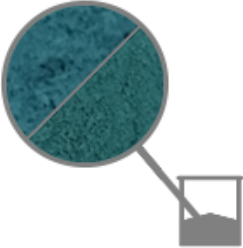
EU Fertilizer

Aspect:

Wettable dust

Colour:

Blue



Foliar fertilizer developed for copper deficiency enriched with boron. It contains copper oxychloride and sulphate obtained from high purity raw materials.

Catalytic action essential for photosynthesis. It increases quantity crop yields and proteins useful to obtain better quality of crops.

Warnings:

Do not use when flowering. Do not mix with organic products and especially protein hydrolysates. Before mixing it with phytosanitaries or other fertilizers make a compatibility test.

i Properties	
Copper (Cu) total 21 (%p/%p)	
Water-soluble boron (B) 0,2 (%p/%p)	
pH dispersion 1% 6,5-7,5	

kg Packages	
Code:PRAM211	
1 kg - bag (box of 20 pcs) - Pallet:600 kg	
Code:PRAM215	
5 kg - bag - Pallet:800 kg	
Code:PRAM210	
10 kg - bag - Pallet:800 kg	

Foliar fertilization	
Fruit trees (apple, pear, peach, cherry, apricot, plum)	2,5-3,2 kg/ha in 600/800 liters of water
Grapes	2,5-3,2 kg/ha in 600/800 liters of water
Olive	3,0-3,9 kg/ha in 600/800 liters of water
Open field (beet, cereals, rice, tobacco)	1,9-2,5 kg/ha in 500/700 liters of water
Ornamental crops	3,2-3,8 kg/ha in 600/800 liters of water
Vegetable crops, strawberry, fennel	3,2-3,8 kg/ha in 600/800 liters of water



B&G Zolfo 80

Sulphur for agricultural application



Corrective

Corrective for agricultural application containing basic sulphur. For sulphur deficiency.

Aspect:

**Highly fine
wetable dust**

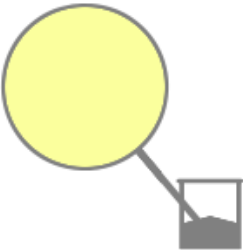
Hydrodispersible wetable formulation obtained only from selected raw materials of high quality.

Colour:

Light yellow

Warnings:

Keep away from moisture and heat sources. In case of mixtures make a compatibility test. Do not mix with mineral oils and alkaline products, halogenated and oxidant substances. Do not exceed recommended dosage rates. Refer to safety datasheet.



i Properties	
Total sulphur (S) 80% (%p/p)	
pH dispersion 1% 5,0-6,0	

kg Packages	
Code:124	
1 kg - bag (box of 20 pcs) - Pallet:600 kg	

Foliar fertilization	
Recommended dosage rates	
200-300 g/100 liters of water	



B&G Zolfo Flow (40)

Sulphur water suspension

Zolfo 40%



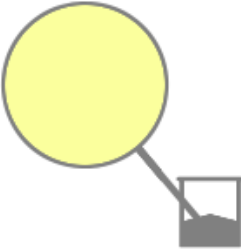
Corrective

Aspect:

Water suspension

Colour:

Yellow



Corrective in suspension for sulphur deficiency, important element for protein synthesis. Used for soil correction of field, vegetable and fruit crops.

Its flowable formulation enables an easy dustless application and better mixability with other products. Having a corrective effect on the soil, it lowers pH and improves the availability of its nutrient elements.

It enhances quantity and quality crop yields integrating sulphur in case of deficiency and increases proteins useful to obtain better quality of crops.

Highly adhesive and resistant to rain washout.

Warnings:

Shake well before its application. Do not use when flowering. To be used in freshest hours of the day. Do not mix with products with alkaline reaction. Before mixing it with phytosanitaries or other fertilizers make a compatibility test. No direct mixing with amino acids, humic acids and organic products. Product is stable at normal temperature and pressure. Storage temperature between 5°C and 40°C. Not combustible. To be used only when strictly required.

i Properties	
Total sulphur (S) 40% (%p/p)	
pH dispersion 1% 5,5 - 6,5	
Density, 25°C 1,30 - 1,35 (g/ml)	
Water solubility Aqueous suspension	

kg Packages	
Code:FLOWZOLFO1	1 kg - bottle (box of 12 pcs) - Pallet:600 kg
Code:FLOWZOLFO5	5 kg - tank - Pallet:630 kg
Code:FLOWZOLFO10	10 kg - tank - Pallet:500 kg

Foliar fertilization	
Fruit trees (apple, pear, peach, cherry, apricot, plum)	200-400 ml in 100 liters of water
Grapes	300-400 ml in 100 liters of water
Olive	300-400 ml in 100 liters of water
Open field (beet, cereals, rice, tobacco), flower crops	350-550 ml in 100 liters of water
Vegetable crops, strawberry, fennel, ornamental crops	250-350 ml in 100 water



Zolfo 51 S Flow SC

Sulphur water suspension

Sulphur 51%

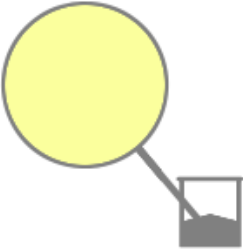
Corrective

Aspect:

Water suspension

Colour:

Yellow



Corrective in suspension for sulphur deficiency and important element for protein synthesis. Used for soil correction of field, vegetable and fruit crops.

Its flowable formulation enables an easy dustless application and better mixability with other products.

Having a corrective effect on the soil, it lowers pH and improves the availability of its nutrient elements.

It enhances quantity and quality crop yields integrating sulphur in case of deficiency and increases proteins useful to obtain better quality of crops.

Highly adhesive and resistant to rain washout.

Warnings:

Shake well before its application. Do not use when flowering. To be used in the freshest hours of the day. Do not mix with products with alkaline reaction. Before mixing it with phytosanitaries or other fertilizers make a compatibility test. No direct mixing with amino acids, humic acids and organic products. Product is stable at normal temperature and pressure. Storage temperature between 5°C and 40°C. Not combustible. To be used only when strictly required.

i Properties	
Total sulphur (S) 51% (%p/p)	
pH dispersion 1%	5,5 - 6,5
Density, 25°C	1,45 - 1,50 (g/ml)
Water solubility	Aqueous suspension

kg Packages	
Code:FLOW51ZOLFO1	
1 kg - bottle (box of 12 pcs) - Pallet:	600 kg
Code:FLOW51ZOLFO5	
5 kg - tank - Pallet:	630 kg
Code:FLOW51ZOLFO10	
10 kg - tank - Pallet:	500 kg

Foliar fertilization	
Fruit trees (apple, pear, peach, cherry, apricot, plum)	150-350 ml in 100 liters of water
Grapes	250-350 ml in 100 liters of water
Olive	250-350 ml in 100 liters of water
Open field (beet, cereals, rice, tobacco), flower crops	300-500 ml in 100 liters of water
Vegetable crops, strawberry, fennel, ornamental crops	200-300 ml in 100 liters of water



Zolfo 55 S Flow SC

Sulphur water suspension

Sulphur 55%



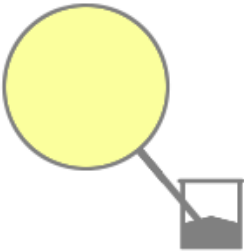
Corrective

Aspect:

Water suspension

Colour:

Yellow



Corrective in suspension for sulphur deficiency, important element for protein synthesis. Used for soil correction of field, vegetable and fruit crops.

Its flowable formulation enables an easy dustless application and better mixability with other products.

Having a corrective effect on the soil, it lowers pH and improves the availability of its nutrient elements.

It enhances quantity and quality crop yields integrating sulphur in case of deficiency and increases proteins useful to obtain better quality of crops.

Highly adhesive and resistant to rain washout.

Warnings:

Shake well before its application. Do not use when flowering. To be used in the freshest hours of the day. Do not mix with products with alkaline reaction. Before mixing it with phytosanitaries or other fertilizers make a compatibility test. No direct mixing with amino acids, humic acids and organic products. Product is stable at normal temperature and pressure. Storage temperature between 5°C and 40°C. Not combustible. To be used only when strictly required.

Properties	
Total sulphur (S) 55% (%p/p)	
pH dispersion 1%	5,5 - 6,5
Density, 25°C	1,50 - 1,55 (g/ml)
Water solubility	Aqueous suspension

Packages	
Code:FLOW55ZOLFO1	
1 kg - bottle (box of 12 pcs) - Pallet:	600 kg
Code:FLOW55ZOLFO5	
5 kg - tank - Pallet:	630 kg
Code:FLOW55ZOLFO10	
10 kg - tank - Pallet:	500 kg

Foliar fertilization	
Fruit trees (apple, pear, peach, cherry, apricot, plum)	150-330 ml in 100 liters of water
Grapes	250-330 ml in 100 liters of water
Olive	250-330 ml in 100 liters of water
Open field (beet, cereals, rice, tobacco)	300-480 ml in 100 liters of water
Vegetable crops, strawberry, fennel, ornamental crops	200-280 ml in 100 liters of water



B&G Tek

Mixture of microelements with copper and boron, enriched with magnesium and sulphur



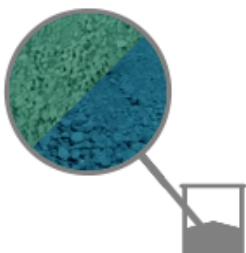
EU Fertilizer

Aspect:

Wettable dust

Colour:

Blue/green



For copper deficiency. Complete nourishment thanks to the content of magnesium, sulphur and boron, essential elements for crops.

It improves the efficiency of phosphate, potassic, nitrogen chemical fertilizers and their spreading uniformity.

Special, high performing formulation with rapid spread, which thanks to the presence of mesoelements and microelements with oxychloride copper provides a complete crop nourishment.

Warnings:

Do not use when flowering. To be used in the freshest hours of the day. Do not mix with products with alkaline reaction. Before mixing it with phytosanitaries or other fertilizers make a compatibility test. No direct mixing with amino acids, humic acids and organic products. To be used only when strictly required.

Properties

Copper (Cu) total 16 (%p/p)
Water-soluble boron (B) 0,5 (%p/p)
Water-soluble magnesium oxide (MgO) 2 (%p/p)
Sulphur trioxide (SO ₃) 36 (%p/p)
pH dispersion 1% 6,5-7,5

Packages

Code:2
1 kg - bag (box of 20 pcs) - Pallet:600 kg
Code:5
5 kg - bag - Pallet:1000 kg
Code:1
10 kg - bag - Pallet:1000 kg

Foliar fertilization

Fruit trees (apple, pear, peach, cherry, apricot, plum)
3,5-4,5 kg/ha in 500/700 liters of water
Grapes
3,5-4,5 kg/ha in 500/700 liters of water
Olive
3,7-4,7 kg/ha in 500/700 liters of water
Open field (beet, cereals, rice, tobacco), flower crops
3,0-5,0 kg/ha in 400/600 liters of water
Vegetable crops, strawberry, fennel, ornamental crops
2,5-3,0 kg/ha in 500/700 liters of water



Magic Blend

Mixture of microelements with copper, boron, manganese, enriched with sulphur and magnesium

Special for olive and vegetable crops

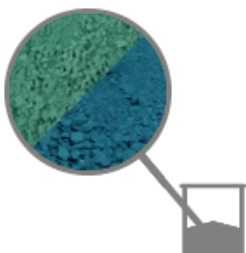
Fertilizer

Aspect:

Wettable dust

Colour:

Blue/green



For microelements deficiency. The special formulation makes it a complete nourishment being rich in copper (from sulphate, hydroxide and oxychloride), boron, manganese, sulphur and magnesium.

The three copper elements play a very important synergic effect thus improving the efficiency of phosphate, potassic, nitrogen chemical fertilizers and their spreading uniformity.

Special, high performing formulation with rapid spread, which thanks to the presence of mesoelements and microelements provides a complete crop nourishment.

Warnings:

Do not use when flowering. To be used in the freshest hours of the day. Do not mix with products with alkaline reaction. Before mixing it with phytosanitaries or other fertilizers make a compatibility test. No direct mixing with amino acids, humic acids and organic products. To be used only when strictly required.

Properties

Copper (Cu) total 10 (% p/p)

Water-soluble boron (B) 0,2 (% p/p)

Water-soluble magnesium oxide (MgO) 2,5 (% p/p)

Water-soluble manganese (Mn) 0,5 (% p/p)

Total sulphur trioxide (SO₃) 46 (% p/p)

pH dispersion 1% 6,5-7,5

Packages

Code:MB1SC

1 kg - bag (box of 20 pcs) - Pallet:600 kg

Code:MB5

5 kg - bag - Pallet:1000 kg

Code:MB10

10 kg - bag - Pallet:1000 kg

Foliar fertilization

Fruit trees (apple, pear, peach, cherry, apricot, plum)
4,0-5,0 kg/ha in 500/700 liters of water

Grapes
4,0-5,0 kg/ha in 500/700 liters of water

Olive
4,2-5,2 kg/ha in 500/700 liters of water

Open field (beet, cereals, rice, tobacco), flower crops
3,0-5,0 kg/ha in 400/600 liters of water

Vegetable crops, strawberry, fennel
2,5-3,0 kg/ha in 500/700 liters of water



B&G Poker

Fluid mixture of microelements with oxychloride copper, hydroxide, sulphate and sulphate manganese with basic sulphur



EU Fertilizer

Aspect:

Water suspension

Colour:

Blue

Foliar fertilizer developed for copper and sulphur deficiency enriched with manganese.

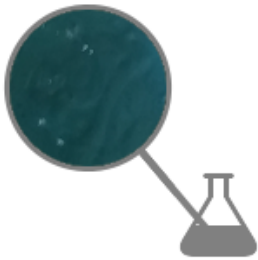
It contains oxychloride copper, hydroxide and sulphate which have a synergic action against copper deficiency. Basic sulphur has an essential action in the proteic synthesis of crops.

Its flowable formulation enables an easy dustless application.

It enhances quantity of crop yields and proteins useful to obtain better quality of crops.

Warnings:

Shake well before its application. Do not use when flowering. To be used in the freshest hours of the day. Do not mix with products with alkaline reaction. Before mixing it with phytosanitaries or other fertilizers make a compatibility test. No direct mixing with amino acids, humic acids and organic products. Product is stable at normal temperature and pressure. Storage temperature between 5°C and 40°C. Not combustible. To be used only when strictly required.



i Properties	
Density, 25°C	1,40–1,44 (g/ml)
Copper (Cu) total	20,0 (% p/p)
Total sulphur (S)	3,2 (% p/p)
Water-soluble manganese (Mn)	0,5 (%p/p)
pH dispersion 1%	5,5–6,5
Water solubility	Aqueous suspension

kg Packages	
Code:FLOWPOKER1	1 kg – bottle (box of 12 pcs) – Pallet:600 kg
Code:FLOWPOKER5	5 kg – tank – Pallet:630 kg
Code:FLOWPOKER10	10 kg – tank – Pallet:500 kg

Foliar fertilization	
Fruit trees (apple, pear, peach, cherry, apricot, plum)	400–1100 g/hl water
Grapes	250–450 g/hl water
Olive	300–600 g/hl water
Open field (beet, cereals, rice, tobacco)	300–700 g/hl water
Vegetable crops, strawberry, fennel, ornamental crops	250–550 g/hl water



B&G Zolfox 20-10 Flow

Fluid mixture of microelements with copper and sulphur enriched with manganese



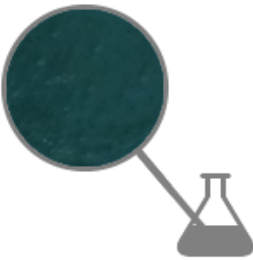
EU Fertilizer

Aspect:

Water suspension

Colour:

Blue



Foliar fertilizer for copper and sulphur deficiency, enriched with manganese.

It contains copper oxychloride, basic sulphur and manganese sulphate.

Its flowable formulation enables an easy dustless application.

It enhances quantity of crop yields and proteins useful to obtain better quality of crops.

Warnings:

Shake well before its application. Do not use the product when flowering. To be used in the freshest hours of the day. Do not mix with products with alkaline reaction. Before mixing it with phytosanitaries or other fertilizers make a compatibility test. No direct mixing with amino acids, humic acids and organic products. Product is stable at normal temperature and pressure. Storage temperature between 5°C and 40°C. Not combustible. To be used only when strictly required.

i Properties	
Copper (Cu) total	10 (% p/p)
Total sulphur (S)	20 (% p/p)
Water-soluble manganese (Mn)	0,5 (% p/p)
pH dispersion 1%	5,5-6,5
Water solubility	Aqueous suspension
Density, 25°C	1,35-1,45 (g/ml)

kg Packages	
Code:ZOLFOX1	1 kg - bottle (box of 12 pcs) - Pallet:600 kg
Code:ZOLFOX5	5 kg - tank - Pallet:630 kg
Code:ZOLFOX10	10 kg - tank - Pallet:500 kg

Foliar fertilization	
Fruit trees (apple, pear, peach, cherry, apricot, plum)	600-800 ml/hl water
Grapes	500-700 ml/hl water
Olive	550-750 ml/hl water
Open field (beet, cereals, rice, tobacco), flower crops	500-700 ml/hl water
Vegetable crops, strawberry, fennel, ornamental crops	500-750 ml/hl water



Flow Mix

Fluid mixture of microelements with copper, boron, manganese and sulphur



EU Fertilizer

Aspect:

Water suspension

Colour:

Blue/grey



Foliar fertilizer for copper and sulphur deficiency, enriched with boron and manganese.

It contains copper oxychloride and sulphate for a synergic action against copper deficiency.

Sulphur allows the key action of crop proteic synthesis.

Its flowable formulation enables an easy dustless application.

It enhances quantity of crop yields and proteins useful to obtain better quality of crops.

Warnings:

Shake well before its application. Do not use when flowering. To be used in the freshest hours of the day. Do not mix with products with alkaline reaction. Before mixing it with phytosanitaries or other fertilizers make a compatibility test. No direct mixing with amino acids, humic acids and organic products. Product is stable at normal temperature and pressure. Storage temperature between 5°C and 40°C. Not combustible. To be used only when strictly required.

Properties
Density, 25°C 1,45 - 1,55 (g/ml)
Copper (Cu) total 10 (% p/p)
Total sulphur (S) 20 (% p/p)
Water-soluble manganese (Mn) 0,7 (% p/p)
Water-soluble boron (B) 0,3 (% p/p)
pH dispersion 1% 6,5 - 7,5
Water solubility Aqueous suspension

Packages
Code:FLOWMIX1 1 kg - bottle (box of 12 pcs) - Pallet:600 kg
Code:FLOWMIX5 5 kg - tank - Pallet:630 kg
Code:FLOWMIX10 10 kg - tank - Pallet:500 kg

Foliar fertilization
Fruit trees (apple, pear, peach, cherry, apricot, plum) 400-600 ml/hl water
Grapes 400-500 ml/hl water
Olive 400-500 ml/hl water
Open field (beet, cereals, rice, tobacco), flower crops 400-500 ml/hl water
Vegetable crops, strawberry, fennel, ornamental crops 500-700 ml/hl water



Flow Mix 8

Fluid mixture of microelements with oxychloride copper and sulphate with manganese and boron, enriched with sulphur

Enriched with boron



Fertilizer

Aspect:

Water suspension

Colour:

Blue



Foliar fertilizer for copper and sulphur deficiency, enriched with boron and manganese.

It contains copper oxychloride and sulphate for a synergic action against copper deficiency.

Sulphur allows the key action of crop proteic synthesis.

Its flowable formulation enables an easy dustless application.

It enhances quantity of crop yields and proteins useful to obtain better quality of crops.

Warnings:

Shake well before its application. Do not use when flowering. To be used in the freshest hours of the day. Do not mix with products with alkaline reaction. Before mixing it with phytosanitaries or other fertilizers make a compatibility test. No direct mixing with amino acids, humic acids and organic products. Product is stable at normal temperature and pressure. Storage temperature between 5°C and 40°C. Not combustible. To be used only when strictly required.

Properties	
Density, 25°C	1,37-1,47 (g/ml)
Copper (Cu) total	8 (% p/p)
Total sulphur (S)	20 (% p/p)
Water-soluble manganese (Mn)	0,5 (%p/p)
Water-soluble boron (B)	0,5 (%p/p)
pH dispersion 1%	6,5-7,5
Water solubility	Aqueous suspension

Packages	
Code:FLOWMIX81	1 kg - bottle (box of 12 pcs) - Pallet:600 kg
Code:FLOWMIX85	5 kg - tank - Pallet:630 kg
Code:FLOWMIX810	10 kg - tank - Pallet:500 kg

Foliar fertilization	
Fruit trees (apple, pear, peach, cherry, apricot, plum)	440-640 ml/hl water
Grapes	440-540 ml/hl water
Olive	440-540 ml/hl water
Open field (beet, cereals, rice, tobacco)	440-540 ml/hl water
Vegetable crops, strawberry, fennel, ornamental crops	540-740 ml/hl water



Equilibrato Flow

Fluid mixture of microelements with copper, boron, manganese, enriched with sulphur



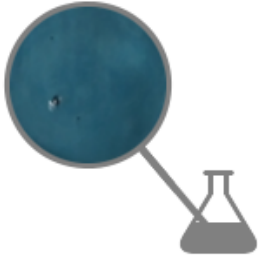
EU Fertilizer

Aspect:

Water suspension

Colour:

Blue/grey



Foliar fertilizer specially developed for vegetable and flower crops. It provides the correct nutritional contribution for the balanced growth of plants and flowers.

It contains copper oxychloride, hydroxide and sulphate for a triple synergic action against copper deficiency.

Sulphur (7%) allows the key action of crop proteic synthesis with a balanced ratio with the remaining microelements composing the formula.

Its flowable formulation enables an easy dustless application, safer for all end users.

Growth of luxuriant flowers and plants is assured in all seasons.

Warnings:

Shake well before its application. Do not use when flowering. To be used in the freshest hours of the day. Do not mix with products with alkaline reaction. Before mixing it with phytosanitaries or other fertilizers make a compatibility test. No direct mixing with amino acids, humic acids and organic products. Product is stable at normal temperature and pressure. Storage temperature between 5°C and 40°C. Not combustible. To be used only when strictly required.

Properties

Density, 25°C 1,23-1,33 (g/ml)

Copper (Cu) total 7 (% p/p)

Total sulphur (S) 7 (% p/p)

Water-soluble manganese (Mn) 1 (% p/p)

Water-soluble boron (B) 0,5 (% p/p)

pH dispersion 1% 7,5-8,5

Water solubility Aqueous suspension

Packages

Code:FLOWEQ1

1 kg - bottle (box of 12 pcs) - Pallet:600 kg

Code:FLOWEQ5

5 kg - tank - Pallet:630 kg

Code:FLOWEQ10

10 kg - tank - Pallet:500 kg

Foliar fertilization

Fruit trees (apple, pear, peach, cherry, apricot, plum)

550-800 ml/hl water

Grapes

550-720 ml/hl water

Olive

550-720 ml/hl water

Open field (beet, cereals, rice, tobacco), flower crops

550-850 ml/hl water

Vegetable crops, strawberry, fennel, ornamental crops

550-730 ml/hl water



Copper Zolf 22 Flow

Fluid mixture of microelements to increase quantity crop yields

EU Fertilizer

Aspect:

Water suspension

Colour:

Blue



Foliar fertilizer for copper and sulphur deficiency, enriched with boron and manganese.

It contains copper oxychloride and sulphate for a synergic action against copper deficiency.

Sulphur allows the key action of crop proteic synthesis.

Its flowable formulation enables an easy dustless application.

It enhances quantity of crop yields and proteins useful to obtain better quality of crops.

Warnings:

Shake well before its application. Do not use when flowering. To be used in the freshest hours of the day. Do not mix with products with alkaline reaction. Before mixing it with phytosanitaries or other fertilizers make a compatibility test. No direct mixing with amino acids, humic acids and organic products. Product is stable at normal temperature and pressure. Storage temperature between 5°C and 40°C. Not combustible. To be used only when strictly required.

i Properties	
Density, 25°C	1,39–1,49 (g/ml)
Copper (Cu) total	9 (% p/p)
Total sulphur (S)	22 (%p/p)
Water-soluble manganese (Mn)	0,6 (% p/p)
Water-soluble boron (B)	0,2 (% p/p)
pH dispersion 1%	6,5–7,5
Water solubility	Aqueous suspension

kg Packages	
Code:FLOWCUS221	1 kg – bottle (box of 12 pcs) – Pallet:600 kg
Code:FLOWCUS225	5 kg – tank – Pallet:630 kg
Code:FLOWCUS2210	10 kg – tank – Pallet:500 kg

Foliar fertilization	
Fruit trees (apple, pear, peach, cherry, apricot, plum)	550–800 ml/hl water
Grapes	500–700 ml/hl water
Olive	500–700 ml/hl water
Open field (beet, cereals, rice, tobacco), flower crops	500–800 ml/hl water
Vegetable crops, strawberry, fennel, ornamental crops	500–700 ml/hl water



Poker MOL

Fluid mixture of microelements (copper, manganese and molybdenum), enriched with sulphur

Special formulation with molybdenum



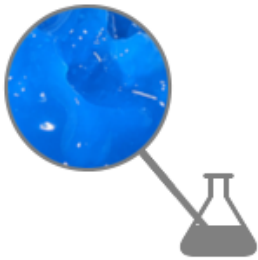
Fertilizer

Aspect:

Water suspension

Colour:

Blue



Specially developed to integrate the correct quantity of molybdenum; its deficiency occurs by discoloration and malformation of leaves, plants with difficult growth, low yield and flowering reduction.

Symptoms are manifested first in the oldest leaves with curling and necrosis. Most affected plants are cruciferae, cucurbits, legumes and some flowers (poinsettia, rose, orchide)

Molybdenum presence in the plants is in rather low concentration, nevertheless playing a key role in the nitrogen cycle. Its deficiency are manifested as nitrogen deficiency being the plant not able to use this element.

It contains copper oxychloride, hydroxide and sulphate for a synergic action against copper deficiency.

Basic sulphur allows the key action of crop proteic synthesis.

Its flowable formulation enables an easy dustless application.

It enhances quantity of crop yields and proteins useful to obtain better quality of crops.

Warnings:

Shake well before its application. Do not use when flowering. To be used in the freshest hours of the day. Do not mix with products with alkaline reaction. Before mixing it with phytosanitaries or other fertilizers make a compatibility test. No direct mixing with amino acids, humic acids and organic products. Product is stable at normal temperature and pressure. Storage temperature between 5°C and 40°C. Not combustible. To be used only when strictly required.

i Properties	
Density, 25°C	1,30 - 1,40 (g/ml)
Copper (Cu) total	10 (% p/p)
Total sulphur (S)	10 (% p/p)
Water-soluble manganese (Mn)	0,7 (% p/p)
Water solubility Molybdenum (Mo)	0,25 (% p/p)
pH dispersion 1%	5,5 - 6,5
Water solubility	Aqueous suspension

kg Packages	
Code:FLOWPOKERM1	1 kg - bottle (box of 12 pcs) - Pallet:600 kg
Code:FLOWPOKERM5	5 kg - tank - Pallet:630 kg
Code:FLOWPOKERM10	10 kg - tank - Pallet:500 kg

Foliar fertilization	
Fruit trees (apple, pear, peach, cherry, apricot, plum)	1000-1200 g/hl water
Grapes	250-450 g/hl water
Olive	300-600 g/hl water
Open field (beet, cereals, rice, tobacco), flower crops	300-700 g/hl water
Vegetable crops, strawberry, fennel, ornamental crops	250-550 g/hl water



B&G Liquid Blend verdi e fiorite

Fluid mixture of microelements

Cu

Fertilizer

Aspect:

Liquid

Colour:

Blue



B&G Liquid Blend green and flowered is a fertilizer specially developed to prevent and treat most of physiopathologies of citrus fruit, other agricultural crops and green and flowered lawns (flower crops) due to microdeficiency.

Its constant use improves final productivity of the plant.

The presence of boron stimulates flowering and is essential for fertilization (development of pollen tube), enhancing sugar transport and stimulating the meristematic activity of vegetative and root apices.

Molybdenum as component of enzymes contributes to fix the atmospheric nitrogen and the development of amino acids.

Copper as component of many enzymes and building the chloroplasts contributes to carbohydrates development.

i Properties	
Density 25°C	1,10-1,20 (g/ml)
pH as it is	2,5-3,0
Water-soluble boron (B)	0,2%
Water-soluble copper (Cu)	4,0%
Water solubility Molibdenum (Mo)	0,02%

kg Packages	
Code:LB1	1 kg - bottle (box of 12 pcs) - Pallet:600 kg
Code:LB5	5 kg - tank - Pallet:630 kg
Code:LB10	10 kg - tank - Pallet:500 kg
Code:LBIBC	IBC - Pallet:1200 kg

Fertigation	
Agrumi	3-5 kg/ha
Flower and vegetable crops	0,5-1,0 kg/800-1000 mq
Fruit trees	3-4 kg/ha
Grapes	3-4,5 kg/ha
Olive	2-3 kg/ha



B&G Calce

Hydrated lime (slaked lime)

Corrective

Rich in calcium as essential nutrient.

Aspect:

Containing as essential ingredient calcium hydroxide obtained from calcination and shutdown of natural limescale deposits.

Dust

High neutralizing value which reduces soil acidity.

Colour:

White

Warnings:

Keep it dry avoiding contact with air and moisture. Keep away from acids, combustible materials and nitrocompounds. Avoid contact with aluminium. Keep dust levels at the minimum. Use required individual protection equipment. Refer to safety datasheet.



Properties

Neutralizing value 85

Total calcium oxide (CaO) 71 (% p/p)

Water solubility 2,24 (kg/l)

pH (sol. 1%) 11,5 - 12,5

Packages

Code:228

10 kg - plastic bag - Pallet:600 kg



Tan Tan 34 (chestnut tannin extract)

Liquid corrective with chestnut tannin extract

Tannin 34%

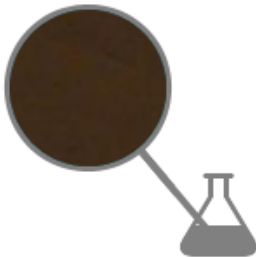
Corrective

Aspect:

Liquid

Colour:

Dark brown



Tan Tan 34 is the new liquid corrective containing chestnut tannin extract authorised according to fertilizer Law Decree 75/10.


Thanks to its formulation rich in polyphenols and organic acids it enables to act and improve chemical/physical/biological characteristics of soil in terms of reaction, salinity and sodium level.


Pluses:


- more rapid absorption and assimilation of nutrients by plants
- improved soil structure mobilising nutrient elements useful for crops
- stimulation of a well balanced development of root system
- better availability of phosphorus for the plant
- revitalization of exploited soils.

Warnings:

Shake well before its application. Do not use when flowering. To be used in the freshest hours of the day. Do not mix with products with alkaline reaction. Before mixing it with phytosanitaries or other fertilizers make a compatibility test. No direct mixing with amino acids, humic acids and organic products. Product is stable at normal temperature and pressure. Storage temperature between 5°C and 40°C. Not combustible. To be used only when strictly required.

 Properties
Density 1,24 (g/cm ³)
pH (sol.1%) 3,00 - 3,50
Tannin 34 (% p/p)
Organic carbon 20,0 - 22,0 (% p/p)

 Packages
Code:TT34F150 150 kg - drum - Pallet:150 kg
Code:TT34IBC IBC - Pallet:1200 kg

 Fertigation
Vegetable and fruit crops 10 - 20 l/ha



Micro-E

Water solution of chelated elements with EDTA

NEW

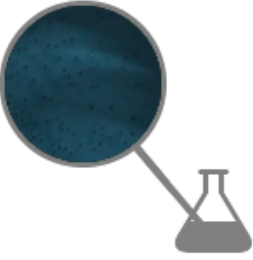
Integrator

Aspect:

Liquid

Colour:

Dark green



Micro-E liquid integrator is a water solution of microelements such as:

- iron
- zinc
- manganese
- copper
- sulphur
- magnesium

In case of microelement deficiency it provides a global supply of nutrients which support the plant throughout growing and flowering.

Warnings:

Shake well before its application. Do not use when flowering. Do not mix with products with alkaline reaction. Before mixing it with phytosanitaries or other fertilizers make a compatibility test. No direct mixing with amino acids, humic acids and organic products. Product is stable at normal temperature and pressure. Storage temperature between 5°C and 40°C. Not combustible.

Properties	
Density, 25°C	1,10-1,20 (g/ml)
pH as it is	6,5-7,0
Water-soluble manganese (Mn) chelated with ETDA	0,015 (%p/p)
Water-soluble iron (Fe) chelated with ETDA	0,050 (%p/p)
Water-soluble zinc (Zn) chelated with ETDA	0,010 (%p/p)
Water-soluble copper (Cu) chelated with ETDA	0,050 (%p/p)
Total sulphur (S)	0,100 (%p/p)

Packages	
Code:MICRO-E1	1 kg - bottle (box of 12 pcs) - Pallet:600 kg
Code:MICRO-E5	5 kg - tank - Pallet:530 Kg
Code:MICRO-E10	10 kg - tank - Pallet:500 kg
Code:MICRO-IBC	IBC - Pallet:1000 kg

Foliar fertilization	
Fruit trees	100-150 ml in 100 liters of water
Grapes	100-150 ml in 100 liters of water
Vegetable and ornamental crops	100-150 ml in 100 liters of water

Radical fertilization	
Fruit trees	3-8 kg/ha
Grapes	3-8 kg/ha
Vegetable and ornamental crops	3-8 kg/ha



Oxi-Z2

Mixture of microelements with copper and sulphur, enriched with zeolite

NEW



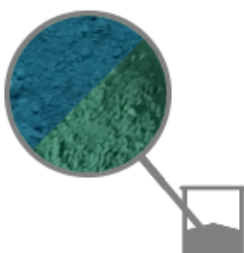
Integrator

Aspect:

Wettable dust

Colour:

Blue/green



For copper and sulphur deficiency, essential elements for crops; thanks to zeolite it improves the efficiency of phosphate, potassic, nitrogen chemical fertilizers and their spreading uniformity.

Special, high performing formulation with rapid spread.

Warnings:

Do not use when flowering. To be used in the freshest hours of the day. Do not mix with products with alkaline reaction. Before mixing it with phytosanitaries or other fertilizers make a compatibility test. No direct mixing with amino acids, humic acids and organic products. To be used only when strictly required.

i Properties	
Copper (Cu) total	25% (%p/p)
Total sulphur trioxide (SO ₃)	15 (%p/p)
pH dispersion	1% 6,5-7,5

kg Packages	
Code:OXIZ1	1 kg - bag (box of 20 pcs) - Pallet:600 kg
Code:OXIZ5	5 kg - bag - Pallet:1000 kg
Code:OXIZ10	10 kg - bag - Pallet:1000 kg

Foliar fertilization	
Fruit trees (apple, pear, peach, cherry, apricot, plum)	3,5-4,5 kg/ha in 500/700 liters of water
Grapes	3,5-4,5 kg/ha in 500/700 liters of water
Olive	3,7-4,7 kg/ha in 500/700 liters of water
Open field (beet, cereals, rice, tobacco), flower crops	3,0-5,0 kg/ha in 400/600 liters of water
Vegetable crops, strawberry, fennel, ornamental crops	2,5-3,0 kg/ha in 500/700 liters of water



PRODUCTS ON DEMAND

Fertilizers NPK



B&GNPK 10-10-10



FlorB&G 20-20-20



FlorB&G 10-52-10



FlorB&G 15-5-30

Other products



B&G PK Liquido 30-20



B&G Solid Blend



Antifoam Agro

Product with raw materials approved for indirect contact with food

High dry content: 16%

Siliconic antifoam

Aspect:

Liquid

Colour:

White



Siliconic antifoam for industrial products (blends, atomizers, containers), fertilizers (agriculture and gardening), other authorized industrial applications. Suitable for the use in mixtures and productive formulations of fertilizers.

Excellent antifoam power (it lowers the foam generated during fertilizer mixing).

Excellent speed reduction, higher than traditional antifoams (RAPID EFFICIENCY).

Resistant to water washout for several days.

Warnings:

10-20 ml per 900-1000 liters of water are recommended pouring product in mixtures or solutions until total foam reduction. Before its use make preliminary tests to determine correct dosage. These remarks are for information only and do not involve any responsibility by B&G Produzioni. Customer shall previously check the suitability of the product for his own processing. Keep it away from direct sunlight.

Properties

Density, 25°C 0,99-1,01 (g/ml)

pH solution as it is 6-8

Dry content 16 (%)

Water solubility Mixable

Packages

Code:ASA16K1

1 kg - bottle (box of 12 pcs) - Pallet:600 kg

Code:ASA16K10

10 kg - tank - Pallet:500 kg



Rock powder (100% kaolin)

Natural substance improving plant resistance to biotic and abiotic stress

Booster of plant defenses

Strengthener

Aspect:

Dust

Colour:

White



Kaolin is a white aluminosilicate ($\text{Al}_2\text{Si}_2\text{O}_5(\text{OH})_4$), non-porous which does not swell, with low abrasivity. Easily dispersible in water and inactive with rather different pH percentages. It is a mineral which properly refined and purified is not harmful to human.

It is a kaolinitic clay with double action: it covers vegetables with a white patina counteracting the thermal effect and preventing burns and it creates an unfriendly environment for oviposition and phytophagous insects.

Kaolin is used for foliar irrigation. As for all treatments based on mineral substances it is recommended to intervene with more treatments repeated rather than exceeding in the dosage in order to avoid problems of asphyxia of vegetables. It is compatible with most pesticides and fertilizers present on the market. When mixed with other products it shall be included first in the liquid solution.

Warnings:

Avoid leaking from the plants. Avoid contact with eye and skin. Thoroughly wash hands after its use. Keep away from children and pets. Do not eat, drink and smoke during the treatment.

Properties

Kaolin 100 (% p/p)

Solubility Dispersible in water

Packages

Code:CAOLINO15

15 kg – plastic bag – Pallet:600 kg

Foliar fertilization

All crops

2,5-4 kg/hl water



Rock powder (50% kaolin in water)

Natural substance improving plant resistance to biotic and abiotic stress

Booster of natural vegetable defenses



Strengthenener

Aspect:

Water suspension

Colour:

Ivory white



B&G Kaolin Flow is already diluted in water to be sprayed on vegetation (leaves and fruit).

It is a natural booster of natural defenses of vegetables and enables their covering to counteract the thermal effect (protective film from sunlight) reducing sunray overheating.

Thanks to this result photosynthesis is improved with consequent more luxuriant vegetation.

It creates an unfriendly environment for oviposition and phytophagous insects.

Warnings:

Shake well before use. Keep it at temperature between 10°C and 40°C in fresh and dry place. Avoid leaking from plants. Avoid contact with eye and skin. Thoroughly wash hands after its use. Keep away from children and pets. Do not eat, drink, smoke during treatment.

Properties

Rock powder 50 (% p/p)

Solubility Aqueous suspension

Packages

Code:CORBOFLOW1F

1 kg – bottle (box of 12 pcs) – Pallet:600 kg

Code:CORBOFLOW5T

5 kg – tank – Pallet:630 kg

Code:CORBOFLOW10T

10 kg – tank – Pallet:500 kg

Foliar fertilization

All crops

4,5 – 7,0 kg/hl water



Chestnut tannin extract

Integral extract of chestnut tannin. Obtained from the water extraction of chestnut wood

NEW



Strengthenener

Aspect:

Liquid

Colour:

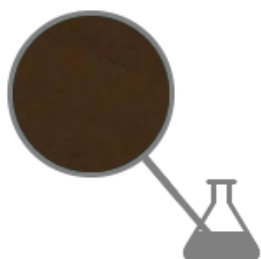
Dark brown

Liquid strengthenener from extract of chestnut tannin authorized by the Fertilizer Law Decree 75/10. Obtained from physical processing only.

Thanks to its formulation rich in polyphenols and organic acids it enables to act and improve chemical/physical/biological characteristics of soil in terms of reaction, salinity and sodium level.

Pluses:

- more rapid absorption and assimilation of nutrients by plants
- improved soil structure mobilising nutrient elements useful for crops
- stimulation of a well balanced development of root system
- better availability of phosphorus for the plant
- revitalization of exploited soils.



Properties

Density 1,24 (g/cm³)

pH (sol.1%) 3,00-3,50

Packages

Code:TN46F150

150 kg - drum - Pallet:150 kg

Code:TN461BC

IBC - Pallet:1200 kg

Fertigation

Vegetable and fruit crops

5-10 l/ha



Zeo-Te Strengthenener

NEW



Strengthenener

Aspect:

Wettable dust

Colour:

Ivory white



Zeolite with micronized chabasite.

Obtained from mechanical grinding of zeolite, able to enhance natural defenses of plants.

- Reduction of sunshine damage
- Usable in all seasons
- Prevention of fungi development
- Repellent of phitopagous insects
- Protection from thermal shocks

Properties
Density 8-9 (g/cm ³)
pH 7
Water solubility N/A

Packages
Code:ZEOTE10 10 kg - bag - Pallet:600 kg
Code:ZEOTE1000 Big Bag - Pallet:600 kg

Foliar fertilization
Flower crops 3-6 kg/ha in 500/1000 liters of water, max 2 kg/hl
Grapes 3-6 kg/ha in 500/1000 liters of water, max 2 kg/hl
Horticulture/fruit growing 3-6 kg/ha in 500/1000 liters of water, max 2 kg/hl



Technical oxychloride (Blue Oxi Tech and Green Oxi Tech)

Technical copper oxychloride (>80% copper trihydroxochloride)

Industrial product

Product for industrial application to be used in blends, colouring agent and pigment.

Aspect:

Technical oxychloride copper (min. 50%Cu)

Wettable dust

CAS no.1332-65-6

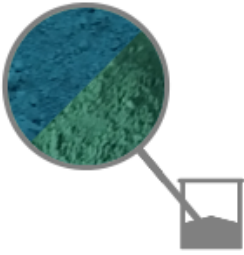
Colour:

EC no.215-572-9

Blue/green

Warnings:

Refer to safety datasheet.



Properties

Copper (Cu) total Min 50% (%p/p)

Water solubility 25°C

Dispersible, suspension (g/100 ml)

Copper oxychloride >80% (%p/p)

Water solubility Aqueous suspension

Packages

Code:OSSTEK505

5 kg – bag – Pallet:1000 kg

Code:OSSTEK5010

10 kg – bag – Pallet:1000 kg

Code:OSSICLORURO

Big Bag – Pallet:1000 kg



Technical Copper Sulphate

Pentahydrate copper sulphate

Cu

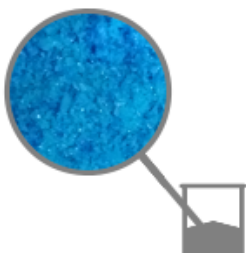
Industrial product

Aspect:

Crystals

Colour:

Blue



High purity hydrosoluble product.

Pentahydrate copper sulphate

CAS no.7758-99-8

EC no. 231-847-6

Index no.029-004-00-0

The specific shape and colouring of crystals, along with relevant tests, enhance its chemical/physical quality characteristics peculiar of a production process using raw materials of high quality.

Specific product for galvanic industry, electroplating, electronic sector, printed circuits, engraving, lithography, surface treatment of metals, wire coating etc.

Warnings:

Do not mix with products with alkaline reaction. Before mixing it with other products make a compatibility test. Refer to safety datasheet.

i Properties	
Water-soluble copper (Cu) Min 25% (% p/p)	
pH solution 1% 4,5-6,0	
Water solubility 25°C 24 (g/ml)	

kg Packages	
Code:103GIND	5 kg - bag - Pallet:1500 kg
Code:102GIND	10 kg - bag - Pallet:1500 kg
Code:101GIND	25 kg - bag - Pallet:1500 kg
Code:BIGBAGGIND	Big Bag - Pallet:1000 kg



Cupromil 5 Industrial Gel

Gel suspension of sulphate copper

Industrial product

Aspect:

Paste/Gel

Colour:

Light blue

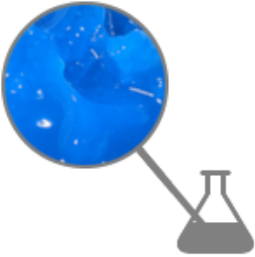
Dark blue gel/paste suspension.

Its specific mixture formulation allows its use as follows:

- Electrodeposition
- Galvanic industry
- Electronic sector, printed circuits
- Engraving/lithography
- Surface treatment of metals and wire coating

Warnings:

Shake well before use. Do not mix with products with alkaline reaction. Before mixing it with other products make a compatibility test. Product is stable at normal temperature and pressure. Storage temperature between 5°C and 40°C. Not combustible. Refer to safety datasheet.



i Properties	
Water-soluble copper (Cu) 5% (% p/p)	
Density, 25°C	1,10-1,20 (g/ml)
pH 1% 5 - 6	

kg Packages	
Code:CUP5GIK1	
1 kg - bottle (box of 12 pcs) - Pallet:600 kg	
Code:CUP5GIK5	
5 kg - tank - Pallet:630 kg	
Code:CUP5GIK10	
10 kg - tank - Pallet:500 kg	
Code:CUP5GIKIBC	
IBC - Pallet:1000 kg	



Responsibility disclaimer

B&G Produzioni srl disclaims any responsibility for possible damage of any kinds which may, directly or indirectly, derive from people or matters because of wrong selection, non observation of all prescriptions mentioned and for improper use of the product by customer/user.

B&G Produzioni srl is also disclaiming any responsibility for possible mistakes in the catalogue (e.g. typing mistakes) or inaccuracy. Information contained in the catalogue may be subject to periodical amendments



B&G Produzioni srl

Sede legale: Via Rosselli, 34 - 37045 Legnago (VR)

Stabilimento: Viale del Lavoro, 6 - 37050 San Pietro di Morubio VR (loc. Bonavicina)

P.IVA e Cod.Fiscale: 10715921002

Telefono 045 7125474 - Email info@begproduzioni.com - www.begproduzioni.it